



149/311 Hay Street,
East Perth, WA 6004
Australia

T: +61 8 6142 5088
F: +61 8 9200 5638
W: www.ishineresources.com
E: admin@ishineresources.com

Date: 12 June 2015

Drilling Program in Ishine's Southern Cross Project

Ishine International Resources Limited ("Ishine" or "the Company") is pleased to advise that a drilling program has recently been completed in Ishine's Southern Cross Project - tenements E37/1073 and E77/1786. The drilling program was conducted by our JV Partner, Inner Mongolia Institute of Survey for Geology & Mineral Resources Exploration as advised in the previous quarterly report.

Location of the Project

Tenement E37/1073 is located approximately 55km northeast of Leonora and 70km west-northwest of Laverton. Tenement E77/1786 is located approximately 65km SW of Southern Cross, 35km SE of Burracoppin, and 20km east of the town of Muntadgin in the West Australia Wheat Belt.

Drilling Program

Three RC drill holes will be drilled on E37/1073 with a total depth of 750m. One RC drill hole will be drilled on E77/1786 with a total depth of 250m. Refer tables below for details of the drill holes location.

E37/1073 Drill Hole Location					
Drill Hole ID	Northing	Easting	Azimuth(°)	Dip(°)	Depth(m)
1073-ZK01	6851343	369831	80	70	250
1073-ZK02	6846971	372950	80	70	250
1073-ZK03	6846191	372963	80	70	250

Table 1: Drilling details for E37/1073



149/311 Hay Street,
East Perth, WA 6004
Australia

T: +61 8 6142 5088
F: +61 8 9200 5638
W: www.ishineresources.com
E: admin@ishineresources.com

E77/1786 Drill Hole Location					
Drill Hole ID	Northing	Easting	Azimuth(°)	Dip(°)	Depth(m)
1786-ZK01	6486540	673629	90	90	250

Table 2: Drilling details for E77/1786

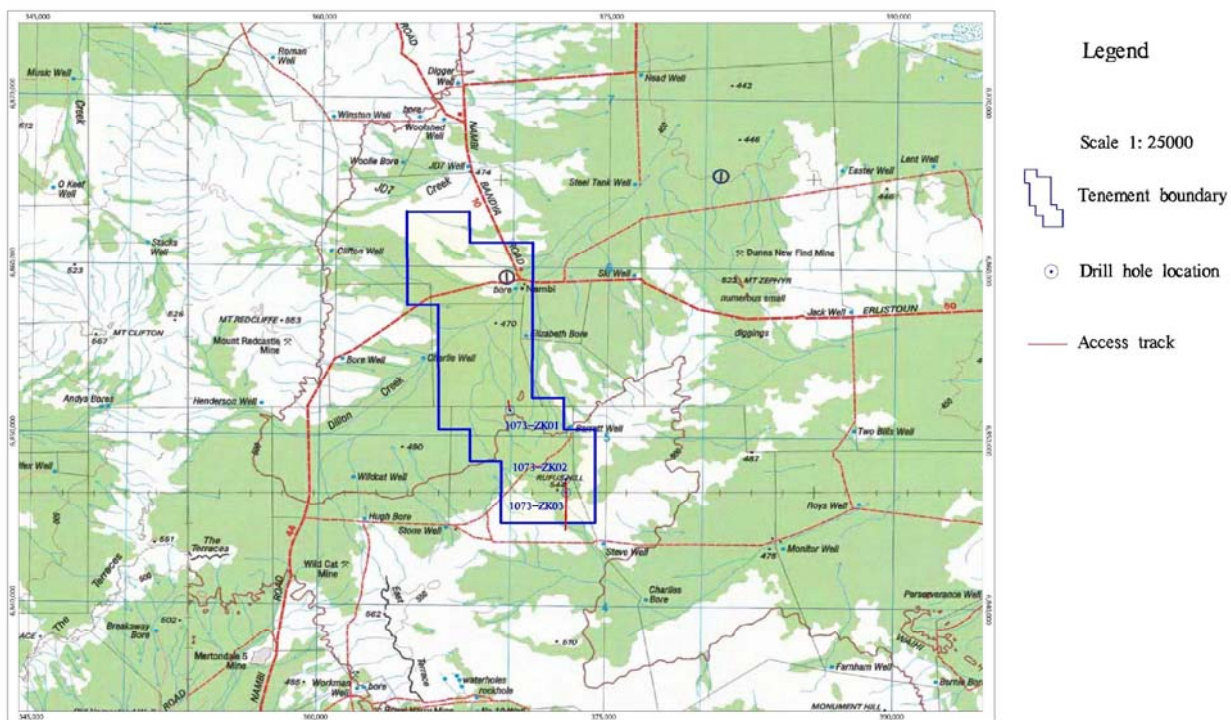


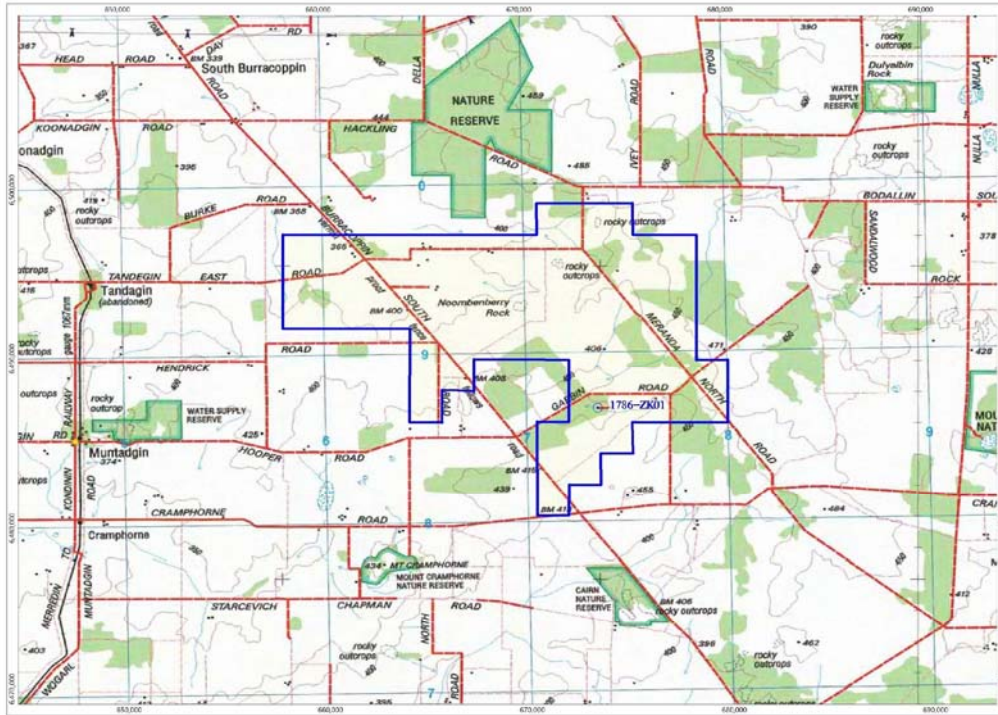
Figure 1: Drilling map for E37/1073



149/311 Hay Street,
East Perth, WA 6004
Australia

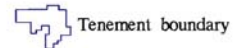
T: +61 8 6142 5088
F: +61 8 9200 5638
W: www.ishineresources.com
E: admin@ishineresources.com

ASX CODE
ISH

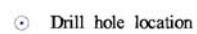


Legend

Scale 1: 25000



Tenement boundary



Drill hole location



Access track

Figure 2: Drilling map for E77/1786

The drilling program has been completed and awaiting results. The Company will advise the results as soon as they become available.

For further information please contact:
Leonard Math | Company Secretary
T: +61 8 6142 5088