



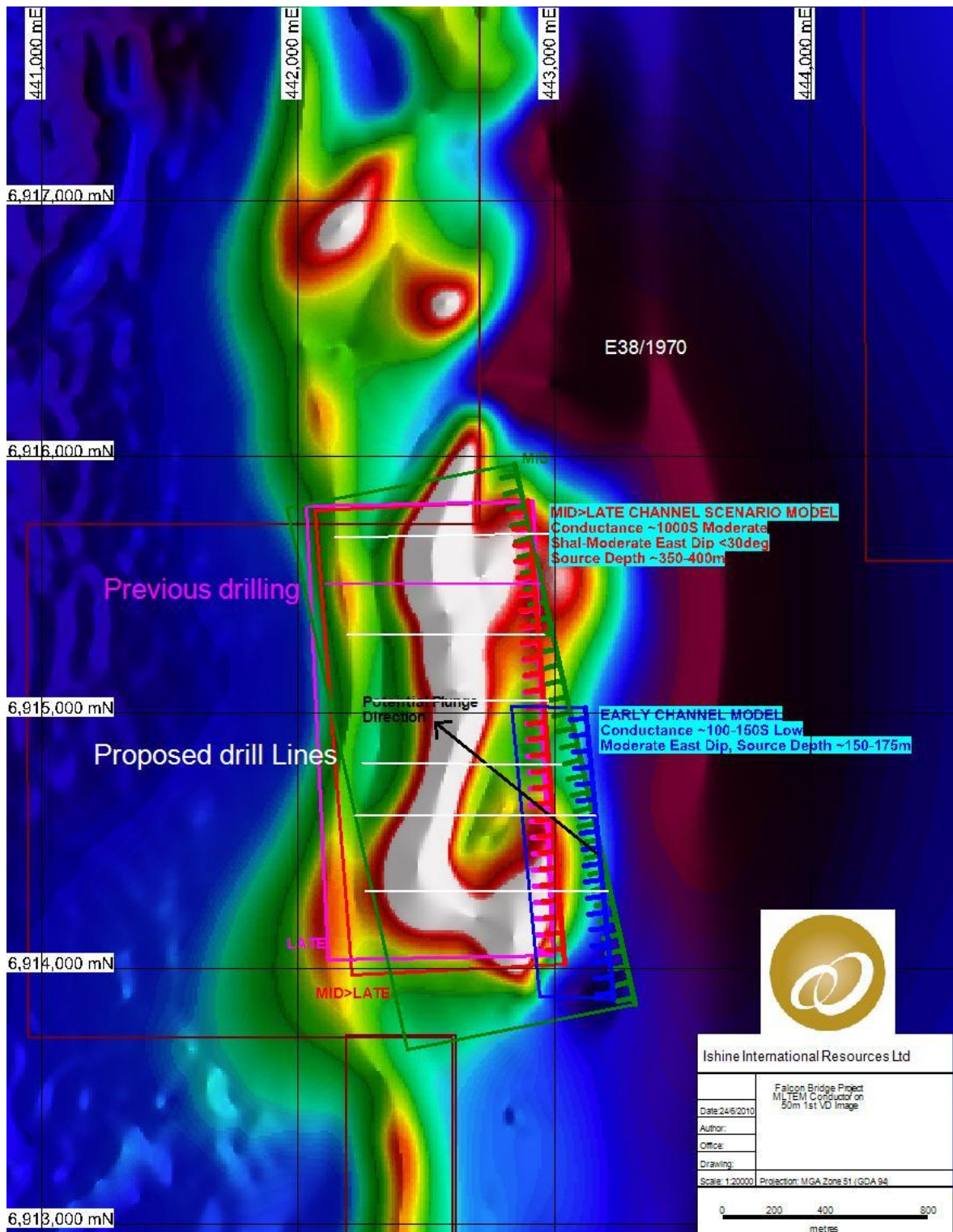
Date: 28<sup>th</sup> June 2010

## **ISHINE HAS COMMENCED DRILLING OF MLTEM TARGET AT FALCON BRIDGE**

Ishine International Resources Ltd ('Ishine') is pleased to announce that drilling has now commenced at the Falcon Bridge Project, 80km north of Laverton in the highly prospective Duketon Greenstone Belt. Recently, a Moving Loop TEM (MLTEM) survey highlighted two significant conductive areas in both shallow and deep bedrock positions appearing coincident with the basal contact of the west dipping ultramafic unit.

This unit is coincident with a significant linear magnetic anomaly, named the "Toro Grande" anomaly by previous explorers. The anomaly is beneath 10-20m of transported cover and has historically been tested by a single line of RAB and Aircore holes, many of which were ineffective. This drilling confirmed the ultramafic stratigraphy and returned a 4m composite nickel assay of 0.76% Ni from 44m in drill-hole AC49.

Ishine's program includes approximately 5,000m of Aircore drilling (see the figure below for the drilling line layout) testing the ultramafic unit beneath the base of weathering, building up the sub-surface geochemical dataset and firming the position of the basal contact of the host-rock. It is anticipated that this program will test the shallower of the two MLTEM conductors, and provide useful geochemical vectoring towards the position of the deeper and stronger conductor. Results from this program will be immediately followed with a round of deeper RC drill testing of the most prospective areas.

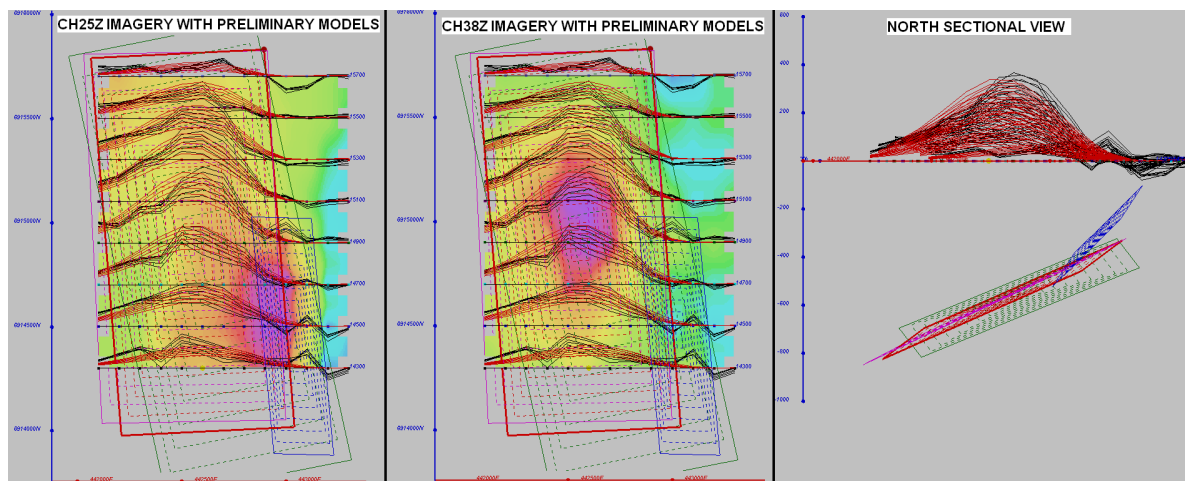


Plan view of the Aircore drilling lines

## FALCON BRIDGE PROJECT BACKGROUND

In late 2009, Ishine signed a farm-in Joint Venture agreement with Strategic Energy Resources Ltd and Strategic Nickel Pty Ltd (collectively referred to as “the SER Group”). The Joint Venture Agreement allows Ishine to earn up to a 70% interest from the SER Group in the tenements by funding up to \$3 million on exploration expenditure. The Joint Venture area covers approximately 17km of strike of ultramafic rich stratigraphy in the Duketon Greenstone Belt coincident with linear magnetic anomalism.

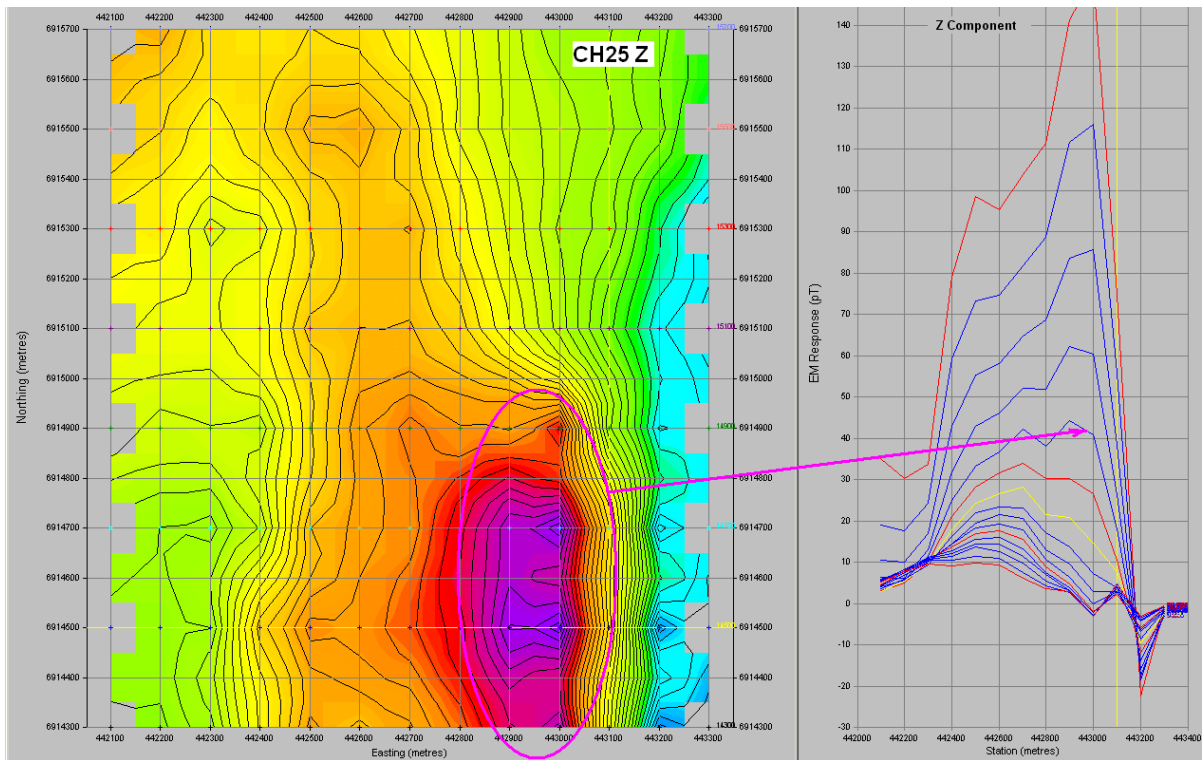
More excitingly, the nearby Rosie Project, managed by Independence Group has reported drilling results, 3.3m (true width) at 9.13% Ni, 1.09% Cu, 0.21% Co and 7.09g/t PGEs (2.20g/t Pt, 1.74g/t Pd, 0.82g/t Rh, 1.79g/t Ru). IGO’s recent finding has provided strong encouragement that nickel sulphide mineralization may be present within the Falcon Bridge Joint Venture Project area.



Plan View Channel 25z

Plan View Channel 38z

Section View looking North



Plan View of Conductor

*The information in this announcement that relates to Exploration Progress has been prepared by Mr Martin Dormer, who is a member of the Australian Institute of Mining and Metallurgy, and a full time employee of Ishine International Resources Ltd. Mr Dormer has sufficient relevant experience in the techniques being reported and styles of mineralisation and types of deposit under consideration, and in the activity he is undertaking, to qualify as a Competent Person as defined in the 2004 Edition of the "Australian Code for Reporting of Exploration Results, Mineral Resources and Ore Reserves" (the JORC Code), and consents to the inclusion of the information in the form and context in which it appears.*

**For further information please contact:**

**Caigen Wang | Managing Director**

T: +61 8 6142 5088

[cwang@ishineresources.com](mailto:cwang@ishineresources.com)

**-END-**

**Martin Dormer | Chief Exploration Geologist**

T: +61 8 6142 5088

[mdormer@ishineresources.com](mailto:mdormer@ishineresources.com)