



DATE: 22nd April 2010

NEW CONDUCTOR AT FALCON BRIDGE PROJECT FROM MLTEM SURVEY

Ishine International Resources Ltd ('Ishine') is pleased to announce that the field work for the Falcon Bridge Moving Loop TEM Survey was completed successfully during early April. The geophysical crew completed the survey over a significant magnetic anomaly in the north-west corner of E38/1970 which overlies an ultramafic unit.

The data has defined conductors in both shallow and deep bedrock positions which appear to be dipping west with the stratigraphy and may also be coincident with the basal position of the ultramafic unit. The shallow bedrock conductor is in the SE corner of the surveyed area. The stronger conductor is deeper and in the central area of the survey and may be related as a down plunge component of the shallow conductor.

This model is currently being refined and available magnetic data is being remodelled. Although it is possible the conductors may be related to sulphidic sediment, the best response will be drill tested for nickel sulphide potential in an upcoming drill program scheduled for May.

In late 2009, Ishine signed a farm-in Joint Venture agreement with Strategic Energy Resources Ltd and Strategic Nickel Pty Ltd (collectively referred to as "the SER Group"). The Joint Venture Agreement allows Ishine to earn up to a 70% interest from the SER Group in the tenements by funding up to \$3 million on exploration expenditure. The Joint Venture area covers approximately 17km of strike of ultramafic rich stratigraphy in the Duketon Greenstone Belt coincident with linear magnetic anomalism. This magnetic anomaly has only previously been drill tested with a line of shallow RAB/Aircore drilling, many holes of which were ineffective tests. One such hole recorded elevated nickel in a 4m composite sample returning a nickel assay of 0.76%.

The Falcon Bridge JV is approximately 80km NNE of Poseidon Nickel's Windarra Project and 100km south of BHP Billiton's Collurabie Project. More excitingly, the nearby Rosie Project, managed by Independence Group has reported drilling results, earlier this month, 3.3m (true width) at 9.13% Ni, 1.09% Cu, 0.21% Co and 7.09g/t PGEs (2.20g/t Pt, 1.74g/t Pd, 0.82g/t Rh, 1.79g/t Ru). IGO's recent finding has provided strong encouragement that nickel sulphide mineralization may be present within the Falcon Bridge Joint Venture Project area.

MEDIA RELEASE

Ishine International Resources Ltd



Suite 2, Level M,
35-37 Havelock St,
West Perth, WA 6005,
Australia

T: (08) 9322 2700

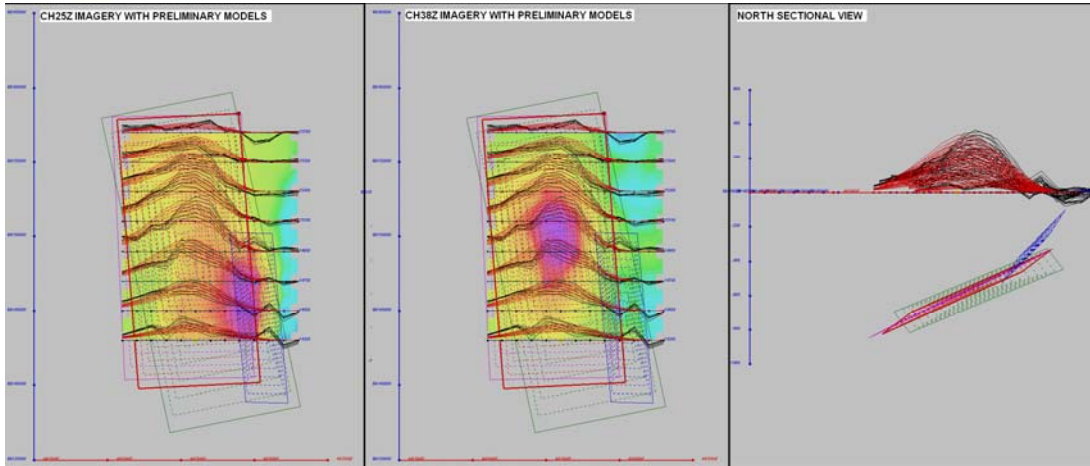
F: (08) 9322 7211

W: www.ishineresources.com

e: admin@ishineresources.com



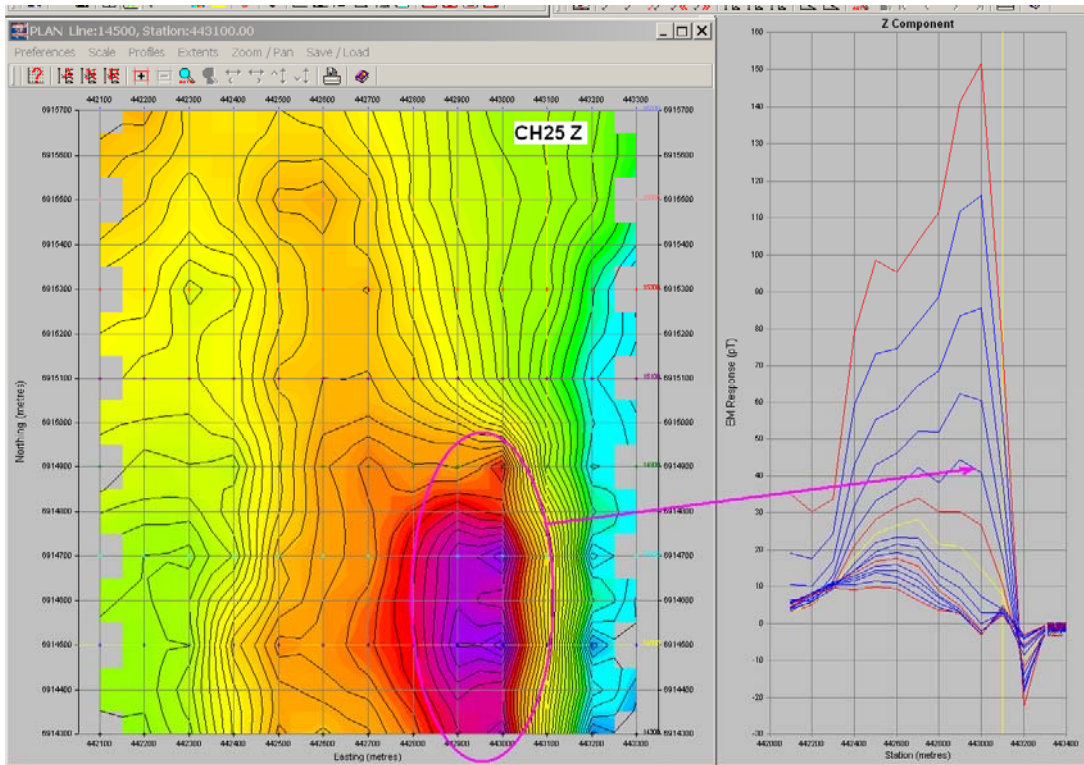
DATE:



Plan View Channel 25z

Plan View Channel 38z

Section View looking North



Plan View of Conductor

MEDIA RELEASE

Ishine International Resources Ltd



Suite 2, Level M,
35-37 Havelock St,
West Perth, WA 6005,
Australia

T: (08) 9322 2700

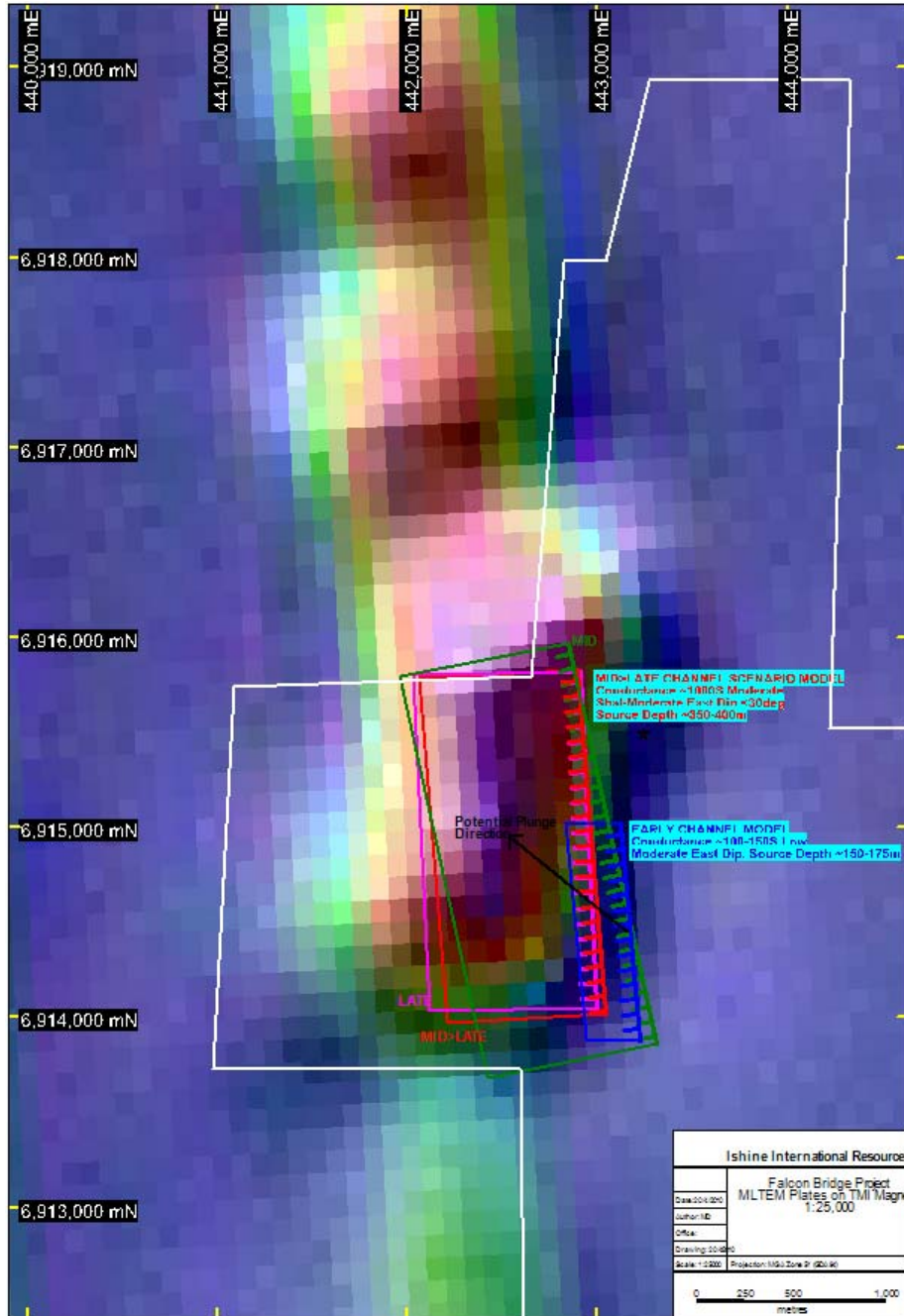
F: (08) 9322 7211

W: www.ishineresources.com

e: admin@ishineresources.com



DATE:



Plan View of Conductors over TMI Magnetic Image

MEDIA RELEASE

Ishine International Resources Ltd

ASX CODE
ISH



Suite 2, Level M,
35-37 Havelock St,
West Perth, WA 6005,
Australia

T: (08) 9322 2700

F: (08) 9322 7211

W: www.ishineresources.com

e: admin@ishineresources.com

DATE: 22nd April 2010

The information in this announcement that relates to Exploration Progress has been prepared by Mr Martin Dormer, who is a member of the Australian Institute of Mining and Metallurgy, and a full time employee of Ishine International Resources Ltd. Mr Dormer has sufficient relevant experience in the techniques being reported and styles of mineralisation and types of deposit under consideration, and in the activity he is undertaking, to qualify as a Competent Person as defined in the 2004 Edition of the "Australian Code for Reporting of Exploration Results, Mineral Resources and Ore Reserves" (the JORC Code), and consents to the inclusion of the information in the form and context in which it appears.

For further information please contact:

Caigen Wang | Managing Director

T: +61 8 6142 5088

cwang@ishineresources.com

Martin Dormer | Chief Exploration Geologist

T: +61 8 9322 2700

mdormer@ishineresources.com

-END-